



PRODUCT CATALOG

2017

DC GEARED MOTOR





Contents

[P03 | About Siggear](#)

[P04 | The Main Products](#)

[P05 | Development Experience](#)

[P07 | The Enterprise Architecture](#)

[P08 | Team To Introduce](#)

[P09 | Management](#)

[P10 | Why Choose Siggear?](#)

[P11 | Factory Equipment](#)

[P13 | SIG-PG Series](#)

[P25 | Other Precision Hardware](#)



ShenZhen SigGear S&T Co., LTD
Huizhou Siggear Drive Machinery CO.,LTD

ADD : Nankeng Village,Xinxu Town,Huiyang District,Huizhou City
Tel : 0755-89807556 / 89807557 Fax : 0755-29834097
Tel : 0752-3265229 Fax : 0752-3265225

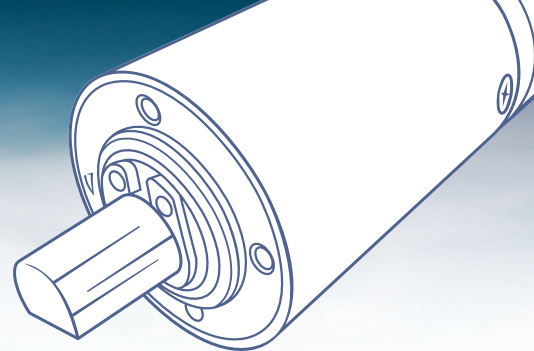
- ✦ 西格使命：
帮客户实现价值 · 让员工幸福生活 · 为股东创造财富
- ✦ 核心价值观：
成就客户、专注创新、诚信承担、团结协作、永不服输

Sigger Mission:

To help customers realize the value, let employees happy life, to create wealth for shareholders

The core values:

Clients, focus, innovation, integrity, unity, cooperation, never yielding



Professional Planetary
GearBox Manufacturer

About Sigear

SigGear, Global Micro Drive System Manufacturer.

We focus on micro-drive system's design, development and manufacturing. We provide drive system solutions, including drive structure design, drive operation design, drive system model production, drive system testing and bulk supply, full range of services to world-wide customers. Our main products are, planetary gear box, gear box, worm gear and other transmission systems and their components.

Founded in September 2008, after eight years of development, SigGear owns a group of highly qualified technical workers in gear and gearbox production, a number of automated high-precision machining equipments, as well as key Know-How of gears' and gearboxes' design and manufacturing.

Since 2010, SigGear has concentrated on the design, development and production of planetary gearboxes. Our transmission systems and solutions were provided for the customers' products, for example: sweeping robots, smart toilets, children accompany robots, security intelligent monitoring, medical equipment, beauty equipment, unmanned aerial vehicles, 4G base station signal converter, ATM, car central locking system, car intelligent tailgate, e-Bicycle, e-power tools, office intelligence, musical metronome, etc.

At the same time, the company carried out a management reorganization, from family business into a modernized enterprise. Advanced management tools were used, formal management standards were introduced. 2016 SigGear got the ISO9001 quality management system certification. TS16949 certification is in process, which is expected to be passed in July. In 2017 SigGear will enter Germany and found a subsidiary.

SigGear, we do professional, we do the best!

The Main Products

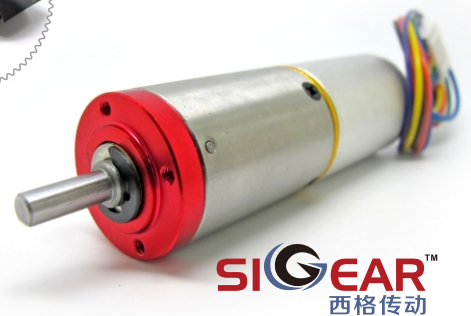
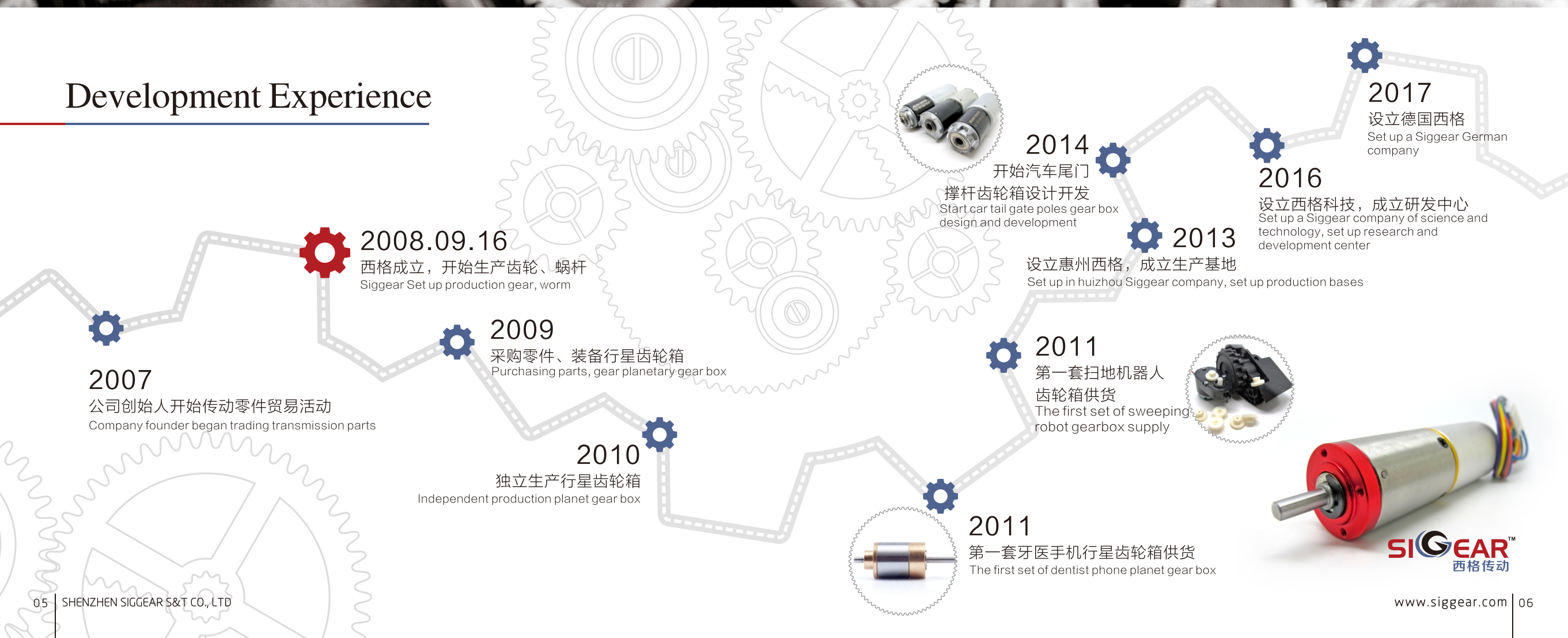
- ◎ Planetary gear box
- ◎ Plastic gear
- ◎ The worm gear
- ◎ Metal worm
- ◎ Other precision hardware





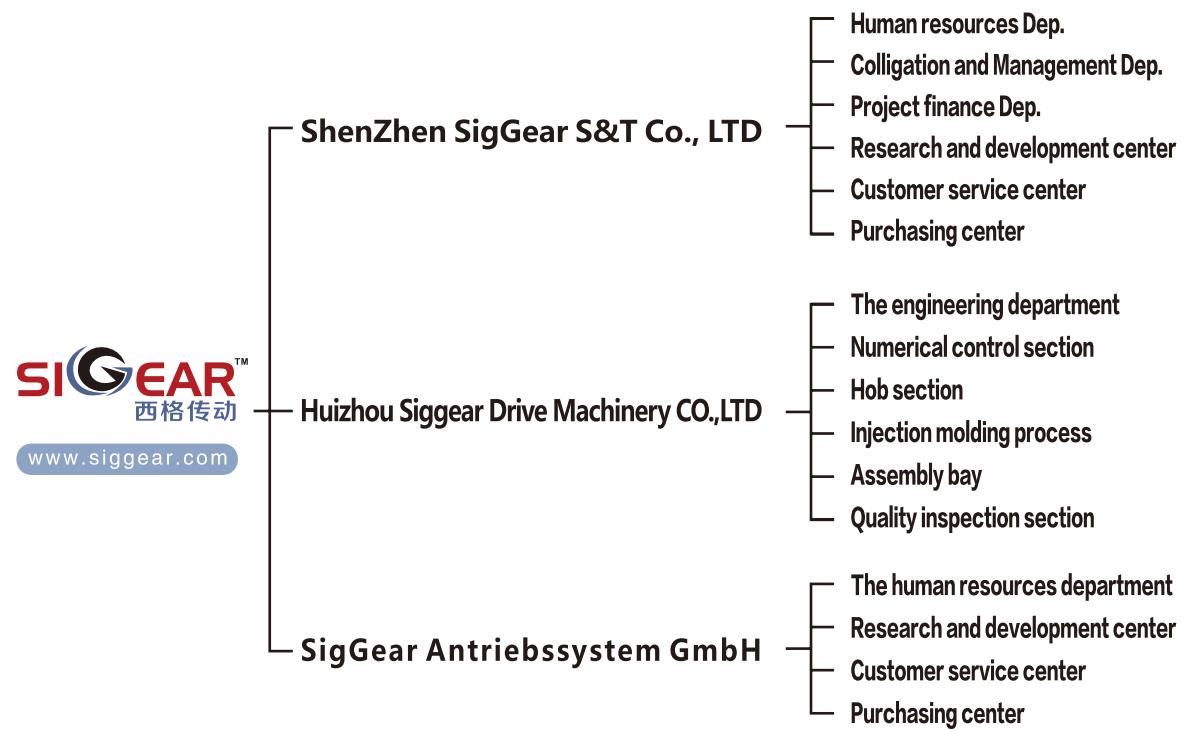
一件事、一群人、一辈子、一起走、走很远.....
One thing, a group of people, the rest of my life, go, go far away...

Development Experience





The Enterprise Architecture



Team To Introduce

Concentrate on, professional, focused on the gearbox production and manufacturing, Design, research and development, production in a body.



Management

Decentralized management:

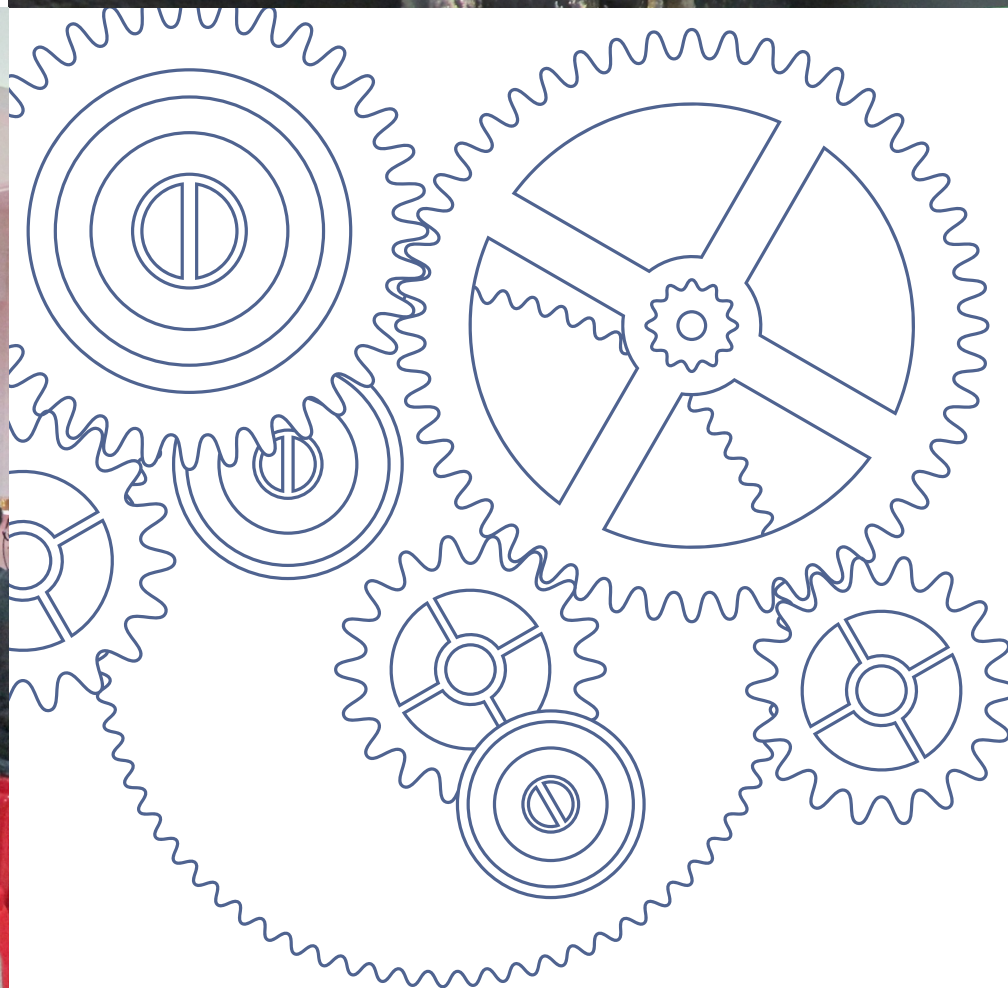
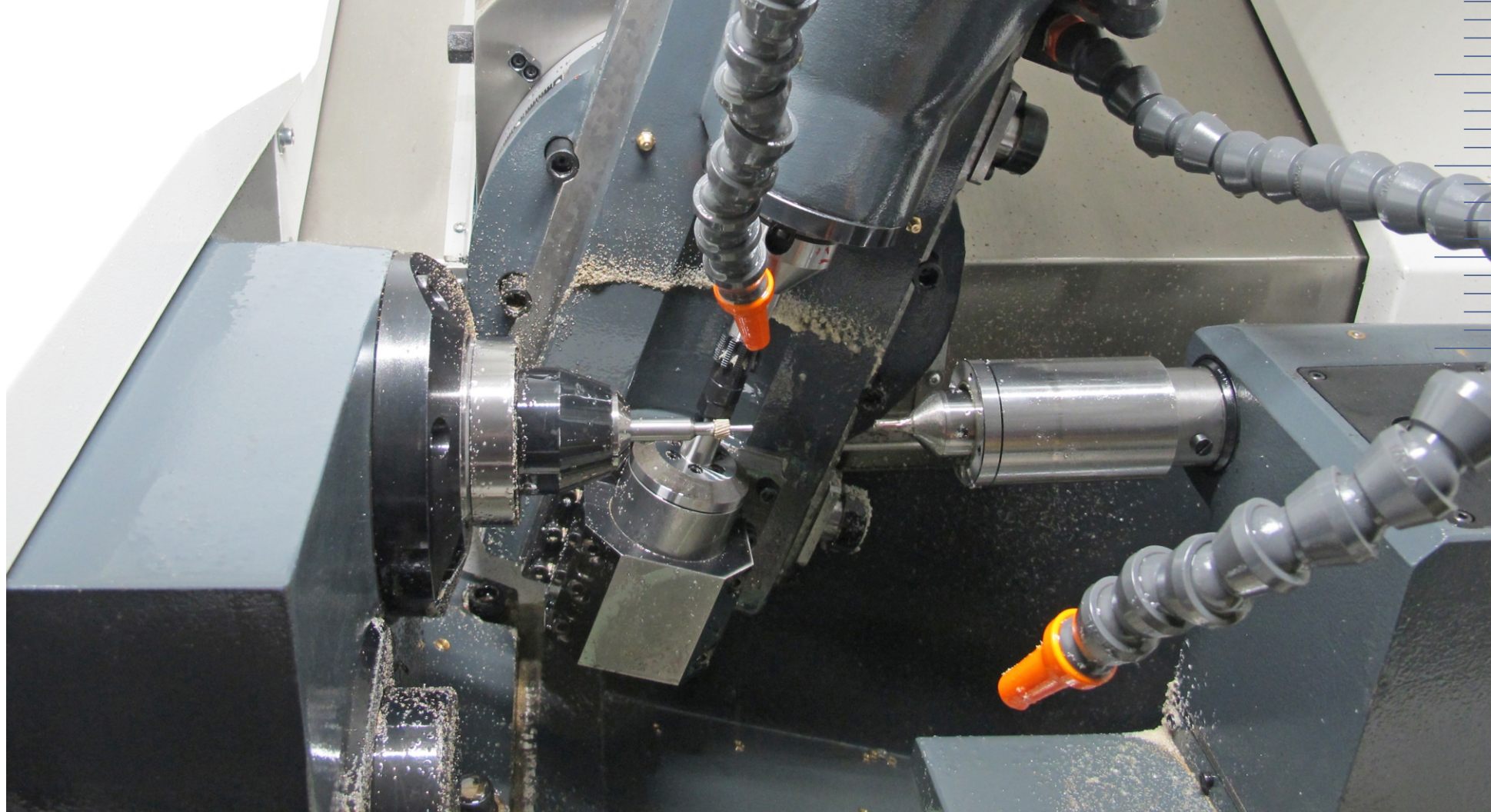
Take the flat, to the center of the management structure, not because of a person, not because it positioned, no principle, hierarchy, break original department Settings, only set position, position, reduce the link of information communication, improve the efficiency of management.

Internal procurement mode:

Turn the various functional departments, workshop section, for the independent cost benefit assessment unit, procurement center purchase order to the customer service center, to research and development center procurement plan, purchasing products to stages, companies gain profit from the procurement center, maximize has clear each functional departments.

ERP, MIS construction:

Manage all resources use ERP system, internal data, formed its own technical data accumulation; Through the external data interface, expansion of ? technical data analysis ability.



Why Choose Siggear?

Siggear, a professional manufacturer of miniature planetary gearboxes, Offer the most cost-effective drive solutions according to customer requirements. Siggear was founded in 2008, dominates the core KNOW-HOW of the design and production of the planetary gear. Every 30-60 days from design to styling, a technical upgrade ist completed. The current product has covered almost all of the micro - drive systems, including automotive, household robots, unmanned aerial vehicles, medical and beauty equipment, power tools, etc.

The modern production plants process the raw materials imported from Germany and Japan under non-dust conditions. Our company is certified according to ISO9001 and TS6949 Quality Assurance System and has more than 10 years of industry experience. Despite the high quality of our products, we are still more cost-effective against similar products. we are suppliers to Siemens, Eaton, ZTE, Dongfeng Peugeot Citroen Automobile, Shanghai Volkswagen, SAIC, and other large companies. Our products are exported to many countries in Europe, East Asia, the Middle East and the Americas.

To provide a better service for German and European customers, Siggear has established a subsidiary in Aachen, Germany on May 2017.

Contact us and roll the world together !



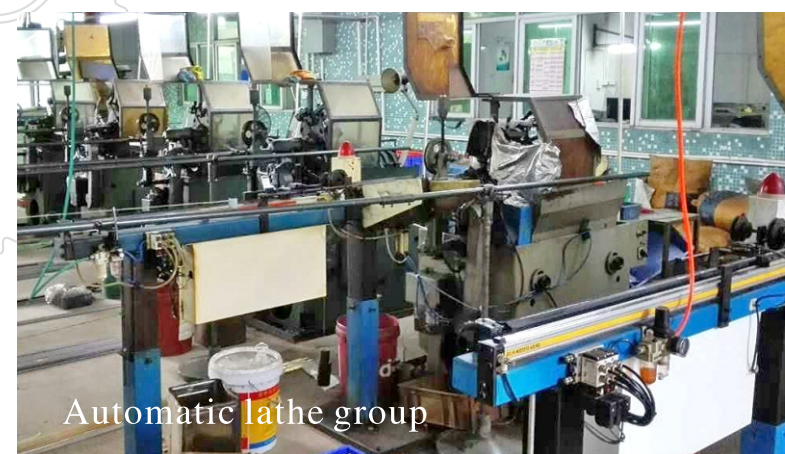
Rolling gear set



The data in the control group



Pouring plastic group



Automatic lathe group

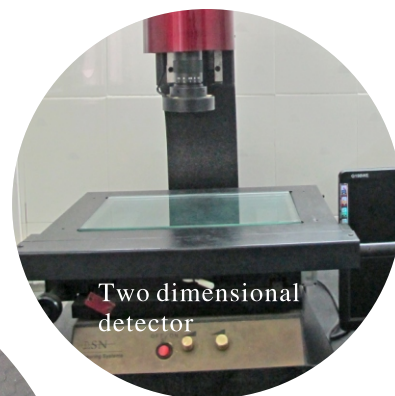


Planetary gear motor testing

Factory Equipment



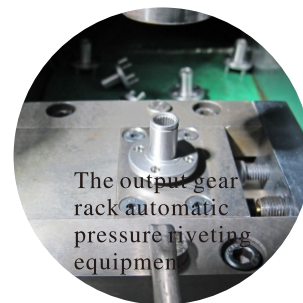
Noise test room



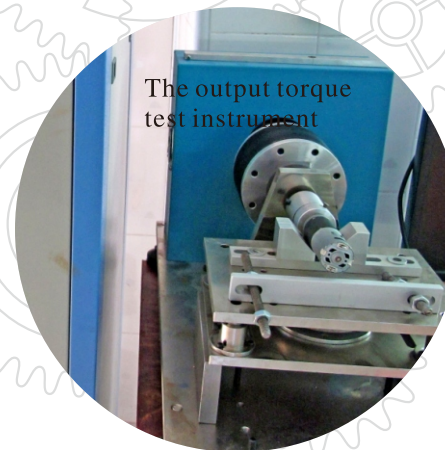
Two dimensional detector



High and low temperature test box



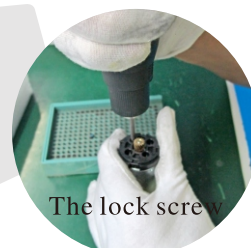
The output gear rack automatic pressure riveting equipment



The output torque test instrument



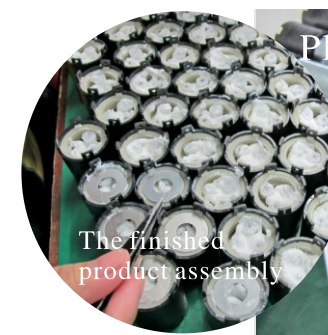
Pull tooth processing



The lock screw



Salt spray test cases



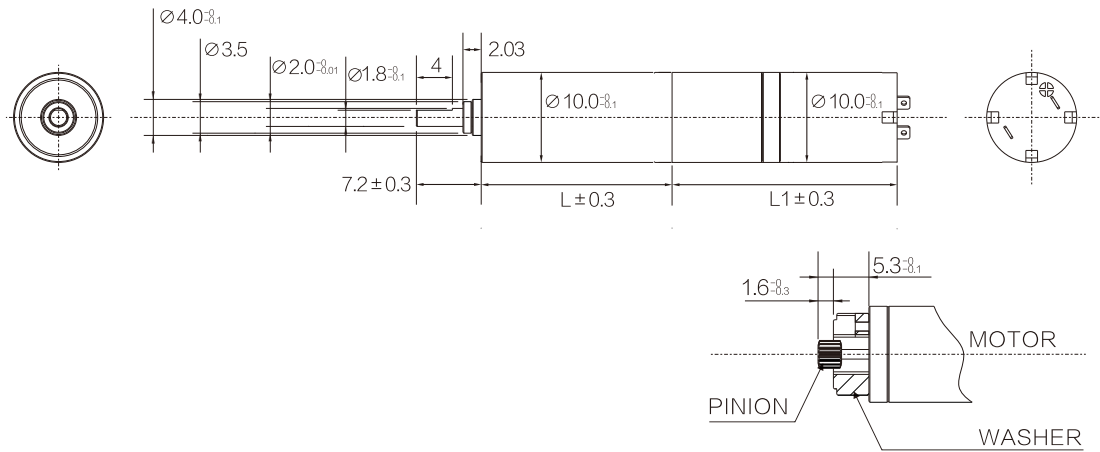
The finished product assembly

SIG-PG10

Housing material	Metal	Backlash,at no-load	≤3℃
Bearing at output		Sleeve bearings	
Radial load(5mm from flange)		≤100gf	
Shaft axial load		≤200gf	
Shaft press fit force,max		≤500gf	
Radial play of shaft		≤0.05mm	
Thrust play of shaft		≤0.3mm	



unit:mm



unit:mm

Pinion Specifications

Module	No. of teeth	Pressure angle	Hole diameter	Reduction ratio
0.17	15	20°	Ø0.99	Practicable

Gearboxes Specifications

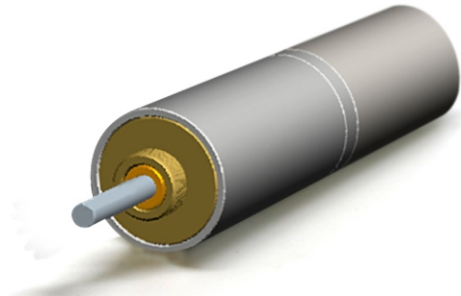
Reduction ratio	1/4	1/16	1/64	1/256	1/1024	1/4096
Rated tolerance torque	50	100	300	400	500	600
Max momentary tolerance torque	150	300	900	1200	1500	1800
Efficiency	85%	75%	65%	55%	45%	40%
Length (L)	11.4	14	16.6	19.2	24.4	27.4
Weight(g)/Sleeve bearings	6.2	7.2	8.2	10.2	11.2	13.2

◎Operating relative humidity: 20%~85%RH ◎Operating temperature range: -10℃~+60℃

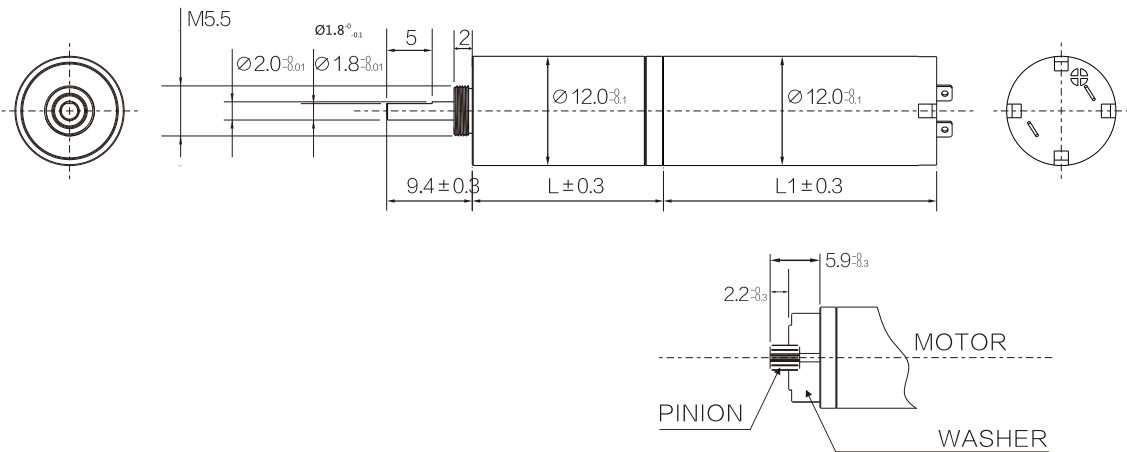
Can according to customer requirements and installation speed change size.

SIG-PG12

Housing material	Metal	Backlash,at no-load	≤3℃
Bearing at output		Sleeve bearings	
Radial load(5mm from flange)		≤0.5kgf	
Shaft axial load		≤0.5kgf	
Shaft press fit force,max		≤1.5kgf	
Radial play of shaft		≤0.05mm	
Thrust play of shaft		≤0.3mm	



unit:mm



unit:mm

Pinion Specifications

Module	No. of teeth	Pressure angle	Hole diameter	Reduction ratio
0.25	15	20°	Ø1.49	1/4,1/16,1/64,1/256 1/1024,1/4096
0.25	15	20°	Ø1.49	1/4.5,1/20,1/91 1/410,1/1845

Gearboxes Specifications

Reduction ratio	1/4 1/4.5	1/16 1/20	1/64 1/91	1/256 1/410	1/1024 1/1845	1/4096
Rated tolerance torque	0.8	1.2	1.6	1.8	2.0	2.0
Max momentary tolerance torque	2.4	3.6	4.8	6.0	6.0	6.0
Efficiency	85%	75%	65%	55%	45%	40%
Length (L)	12.8	16.1	19.4	22.7	26.0	29.3
Weight(g)/Sleeve bearings	12.6	14.7	16.8	18.9	21.0	23.1

◎Operating relative humidity: 20%~85%RH ◎Operating temperature range: -10℃~+60℃

Can according to customer requirements and installation speed change size.

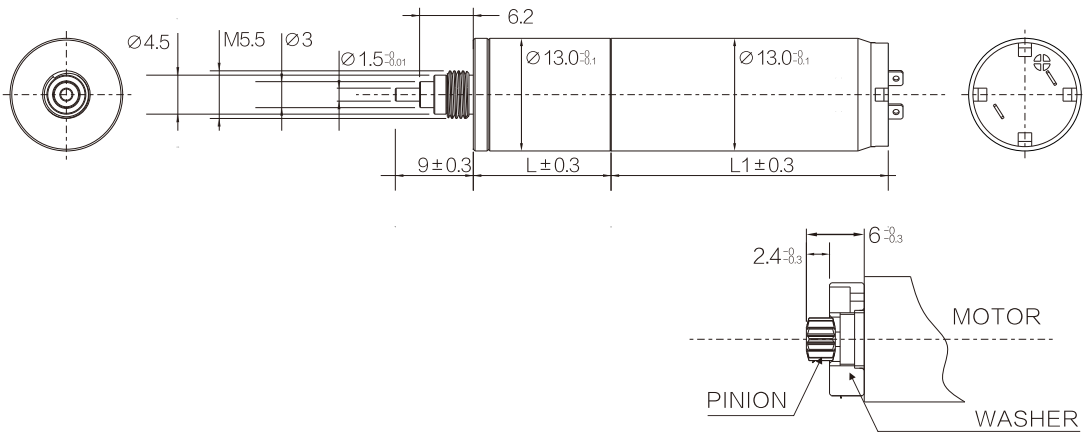
SIG-PG13

Housing material	Metal	Backlash,at no-load	≤3℃
Bearing at output		Sleeve bearings	
Radial load(5mm from flange)		≤0.5kgf	
Shaft axial load		≤0.5kgf	
Shaft press fit force,max		≤1.5kgf	
Radial play of shaft		≤0.05mm	
Thrust play of shaft		≤0.3mm	



unit:mm

Appearance Size



unit:mm



Pinion Specifications

Module	No. of teeth	Pressure angle	Hole diameter	Reduction ratio
0.3	11	20°	Ø1.49	Practicable

Gearboxes Specifications

Reduction ratio	1/4	1/16	1/64	1/256	1/1024	1/4096
Rated tolerance torque	0.8	1.2	1.6	1.8	2.0	2.0
Max momentary tolerance torque	2.4	3.6	4.8	5.4	6.0	6.0
Efficiency	85%	75%	65%	55%	45%	40%
Length (L)	10.2	13.5	16.8	20.1	23.4	26.7
Weight(g)/Sleeve bearings	11.2	13.3	15.4	17.5	19.6	21.7

◎Operating relative humidity: 20%~85%RH ◎Operating temperature range: -10℃~+60℃

Can according to customer requirements and installation speed change size.

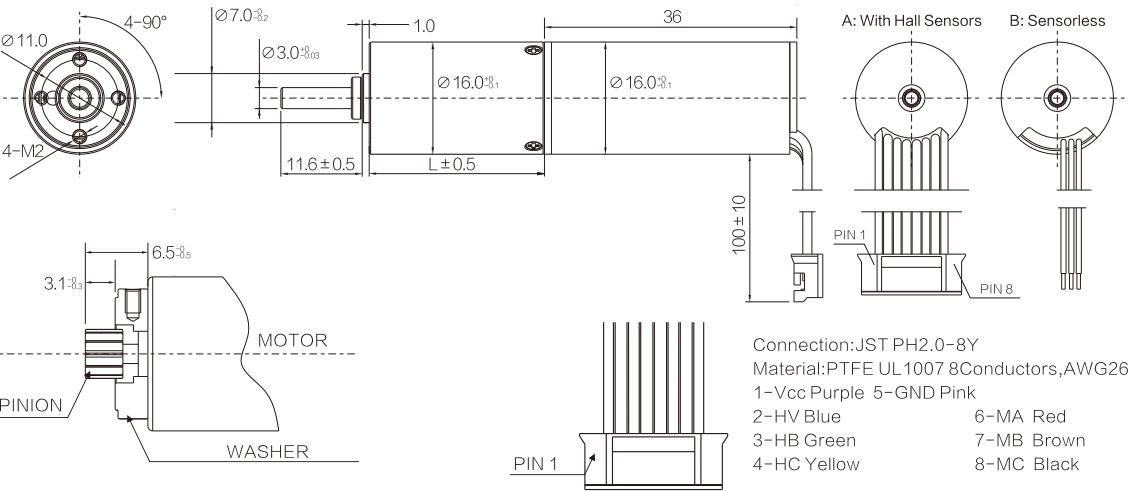
SIG-PG16

Housing material	Metal	Backlash,at no-load	≤3℃
Bearing at output		Sleeve bearings	
Radial load(5mm from flange)		≤0.5kgf	
Shaft axial load		≤0.5kgf	
Shaft press fit force,max		≤1.5kgf	
Radial play of shaft		≤0.05mm	
Thrust play of shaft		≤0.3mm	



unit:mm

Appearance Size



unit:mm



Pinion Specifications

Module	No. of teeth	Pressure angle	Hole diameter	Reduction ratio
0.3	9	20°	Ø1.99	1/4.5,1/20,1/91 1/410,1/1845
0.3	9	20°	Ø1.99	1/4,1/16,1/64 1/256,1/1024,1/4096

Gearboxes Specifications

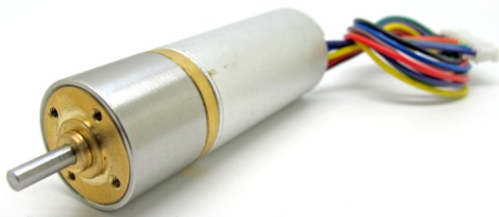
Reduction ratio	1/4 1/4.5	1/16 1/20	1/64 1/91	1/256	1/410	1/1024	1/1845
Rated tolerance torque	1.0	1.5	2.0	2.5	2.5	3.0	3.0
Max momentary tolerance torque	3.0	4.5	6.0	7.5	7.5	9.0	9.0
Efficiency	80%	70%	60%	50%	50%	40%	40%
Length (L)	15.05	18.7	22.35	26	26	29.65	29.65
Weight(g)/Sleeve bearings	19.0	23.0	27.0	31.0	31.0	35.0	35.0

◎Operating relative humidity: 20%~85%RH ◎Operating temperature range: -10℃~+60℃

Can according to customer requirements and installation speed change size.

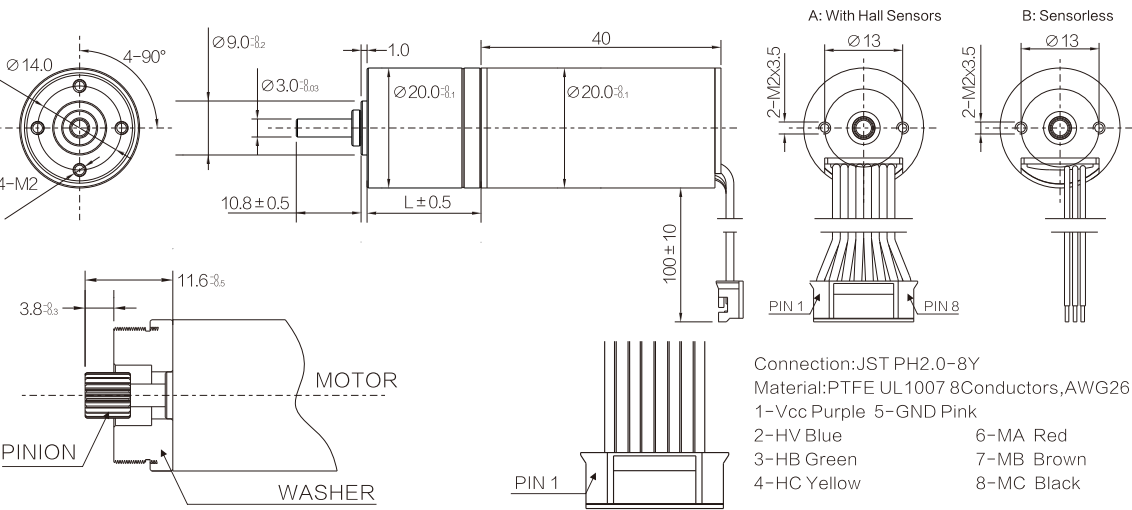
SIG-PG20

Housing material	Metal	Backlash,at no-load	≤3℃
Bearing at output		Sleeve bearings	
Radial load(5mm from flange)		≤1kgf	
Shaft axial load		≤0.7kgf	
Shaft press fit force,max		≤5kgf	
Radial play of shaft		≤0.05mm	
Thrust play of shaft		≤0.3mm	



Appearance Size

unit:mm



unit:mm

Pinion Specifications

Module	No. of teeth	Pressure angle	Hole diameter	Reduction ratio
0.3	12	20°	Ø2.99	1/4.75,1/22.5,1/107.2,1/509
0.3	15	20°	Ø2.99	1/4,1/16,1/64,1/256,1/1024
0.3	18	20°	Ø2.99	1/3.5,1/12.3,1/42.9,1/150,1/525.2,1/1838

Gearboxes Specifications

Reduction ratio	1/3.5,1/4,1/4.75	1/12.3,1/16,1/22.5	1/42.9,1/64,1/107.2	1/150,1/256,1/509	1/1024,1/525.2,1/1838
Rated tolerance torque	1.0	1.5	2.0	2.5	3.0
Max momentary tolerance torque	3.0	4.5	6.0	7.5	9.0
Efficiency	80%	70%	60%	50%	40%
Length (L)	14.4	18.05	21.70	25.35	29.0
Weight(g)/Sleeve bearings	26.0	30.0	34.0	39.0	43.0

◎Operating relative humidity: 20%~85%RH

◎Operating temperature range: -10℃~+60℃

Can according to customer requirements and installation speed change size.

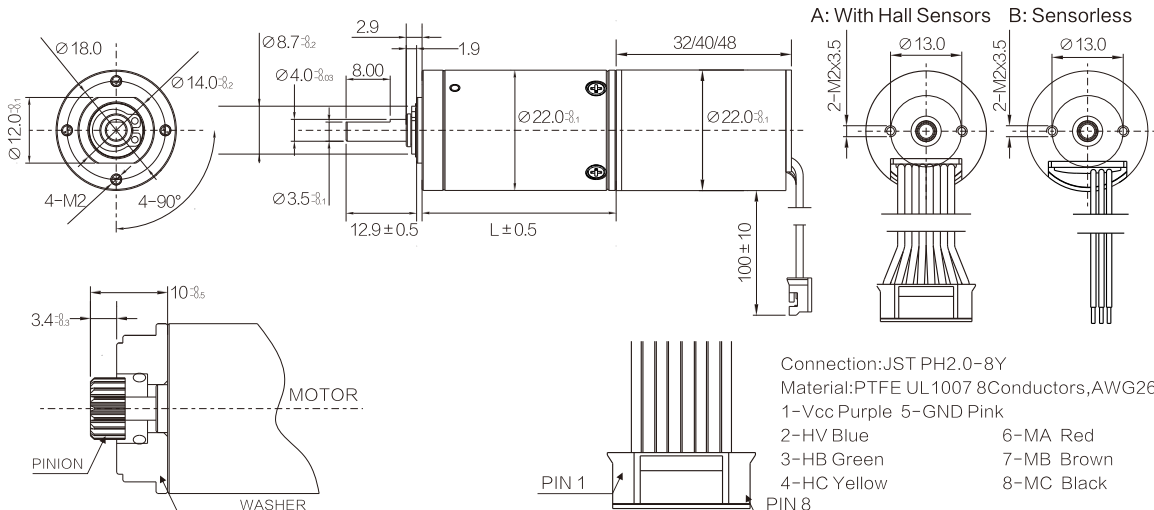
SIG-PG22

Housing material	Metal	Backlash,at no-load	≤3℃
Bearing at output		Sleeve bearings	
Radial load(5mm from flange)		≤1kgf	
Shaft axial load		≤0.7kgf	
Shaft press fit force,max		≤6kgf	
Radial play of shaft		≤0.05mm	
Thrust play of shaft		≤0.3mm	



Appearance Size

unit:mm



unit:mm

Pinion Specifications

Module	No. of teeth	Pressure angle	Hole diameter	Reduction ratio
0.4	9	20°	Ø2.99	1/6,1/36,1/216,1/1296
0.4	12	20°	Ø2.99	1/4.75,1/22.5,1/107.2,1/509
0.4	15	20°	Ø2.99	1/4,1/16,1/64,1/256,1/1024
0.4	18	20°	Ø2.99	1/3.5,1/12.3,1/42.9,1/150,1/525.2,1/1838.3

Gearboxes Specifications

Reduction ratio	1/3.5,1/4 1/4.75,1/6	1/12.3,1/16 1/22.5,1/36	1/42.9,1/64 1/107.2,1/216	1/150,1/256 1/509,1/525.2	1/1024,1/1296 1/1838.3
Rated tolerance torque	1.0	1.5	2.0	2.5	3.0
Max momentary tolerance torque	3.0	4.5	6.0	7.5	9.0
Efficiency	80%	70%	60%	50%	40%
Length (L)	14.4	31.0	21.70	25.35	29.0
Weight(g)/Sleeve bearings	27.0	31.0	35	40	44.0

◎Operating relative humidity: 20%~85%RH

◎Operating temperature range: -10℃~+60℃

Can according to customer requirements and installation speed change size.

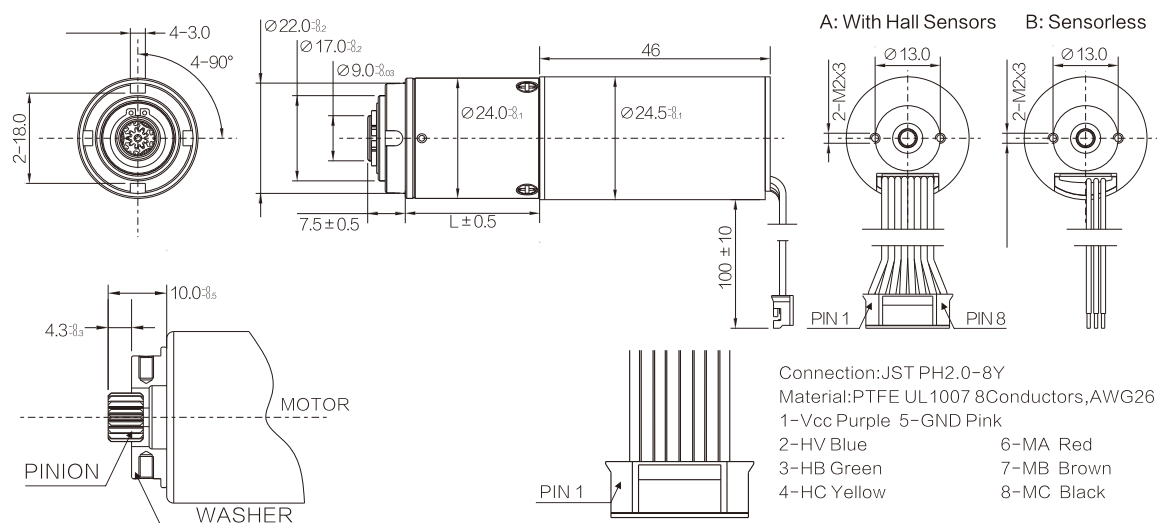
SIG-PG24

Housing material	Metal	Backlash, at no-load	$\leq 3^{\circ}\text{C}$
Bearing at output		Sleeve bearings	
Radial load (5mm from flange)		$\leq 1\text{kgf}$	
Shaft axial load		$\leq 0.7\text{kgf}$	
Shaft press fit force, max		$\leq 6\text{kgf}$	
Radial play of shaft		$\leq 0.05\text{mm}$	
Thrust play of shaft		$\leq 0.3\text{mm}$	



Appearance Size

unit:mm



Connection: JST PH2.0-8Y
Material: PTFE UL 1007 8Conductors, AWG26
1-Vcc Purple 5-GND Pink
2-HV Blue 6-MA Red
3-HB Green 7-MB Brown
4-HC Yellow 8-MC Black

unit:mm

Pinion Specifications

Module	No. of teeth	Pressure angle	Hole diameter	Reduction ratio
0.4	9	20°	Ø2.99	1/6.67,1/44.5,1/296.7,1/1979
0.4	12	20°	Ø2.99	1/5.25,1/27.5,1/144.7,1/759.7,1/3988
0.4	15	20°	Ø2.99	1/4.4,1/19.4,1/85,1/374,8,1/1649
0.4	18	20°	Ø2.99	1/3.83,1/14.7,1/56.2,1/215.4,1/825,1/3159.7
0.4	21	20°	Ø2.99	1/3.43,1/11.8,1/40.35,1/38.4,1/474.8,1/1628.4

Gearboxes Specifications

Reduction ratio	1/3.43,1/3.83 1/4,1/5.25,1/6.67	1/11.8,1/14.7 1/19.4,1/27.5,1/44.5	1/40.35,1/56.2 1/185,1/138.4,1/144.7	1/215.4,1/296.7 1/374.8,1/474.8,1/825	1/1628.4,1/1649 1/1979,1/3159.7,1/3988
Rated tolerance torque	2.0	3.0	4.0	5.0	5.0
Max momentary tolerance torque	6.0	9.0	12.0	15.0	18.0
Efficiency	80%	70%	60%	50%	40%
Length (L)	23.3	29.5	35.7	41.9	48.1
Weight(g)/Sleeve bearings	46	51	58	65	72

◎Operating relative humidity: 20%~85%RH

◎ Operating temperature range: $-10^{\circ}\text{C}\sim+60^{\circ}\text{C}$

Can according to customer requirements and installation speed change size.

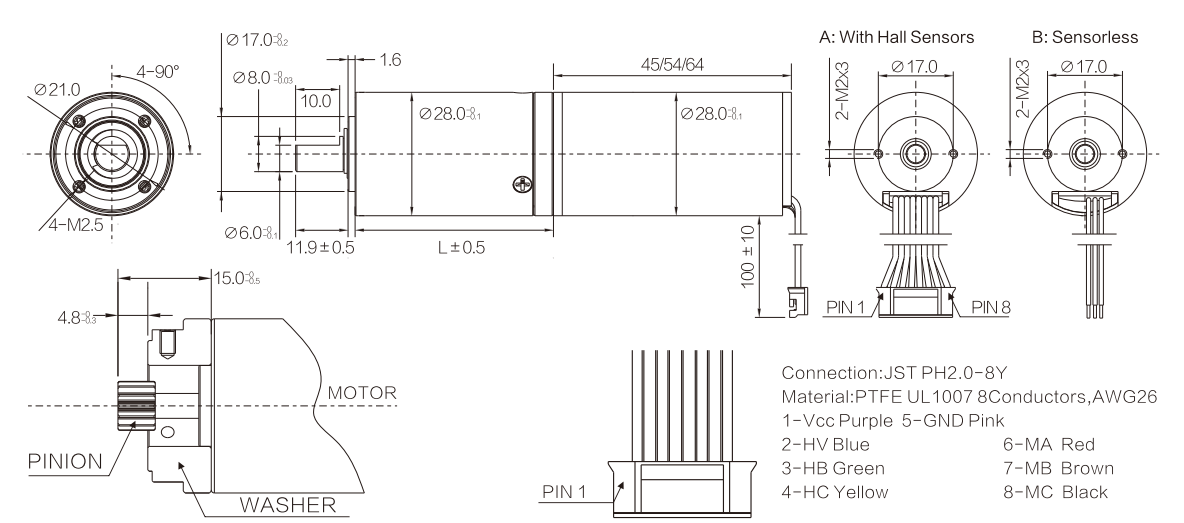
SIG-PG28

Housing material	Metal	Backlash, at no-load	$\leq 3^{\circ}\text{C}$
Bearing at output		Sleeve bearings	
Radial load (5mm from flange)		$\leq 1\text{kgf}$	
Shaft axial load		$\leq 0.7\text{kgf}$	
Shaft press fit force, max		$\leq 6\text{kgf}$	
Radial play of shaft		$\leq 0.05\text{mm}$	
Thrust play of shaft		$\leq 0.3\text{mm}$	



Appearance Size

unit:mm



Connection: JST PH2.0-8Y
Material: PTFE UL1007 8Conductors, AWG26
1-Vcc Purple 5-GND Pink
2-HV Blue 6-MA Red
3-HB Green 7-MB Brown
4-HC Yellow 8-MC Black

unit:mm

Pinion Specifications

Module	No. of teeth	Pressure angle	Hole diameter	Reduction ratio
0.5	8	20°	Ø3.99	1/6.75,1/45.5,1/307.5
0.5	11	20°	Ø3.99	1/5.18,1/26.8,1/139,1/720
0.5	14	20°	Ø3.99	1/1.285,1/18.3,1/78.7,1/337.3,1/845.9
0.5	17	20°	Ø3.99	1/3.7,1/13.7,1/50.65,1/187.4,1/693.4

Gearboxes Specifications

Reduction ratio	1/3.7, 1/4.285 1/5.18, 1/6.75	1/13.7 1/18.3	1/26.8 1/45.5	1/50.65 1/78.7	1/139	1/187, 1/307.5 1/337.3, 1/693.4 1/845.9, 1/720
Rated tolerance torque	2.0	3.0	4.0	6.0	8.0	10.0
Max momentary tolerance torque	6.0	9.0	12.8	18.0	24.0	30.0
Efficiency	80%	70%	60%	60%	60%	50%
Length (L)	24.5	30.9	37.3	37.3	37.3	43.7
Weight(g)/Sleeve bearings	70	80	93	93	93	107

◎Operating relative humidity: 20%~85%RH

◎Operating temperature range: -10℃~+60℃

Can according to customer requirements and installation speed change size.

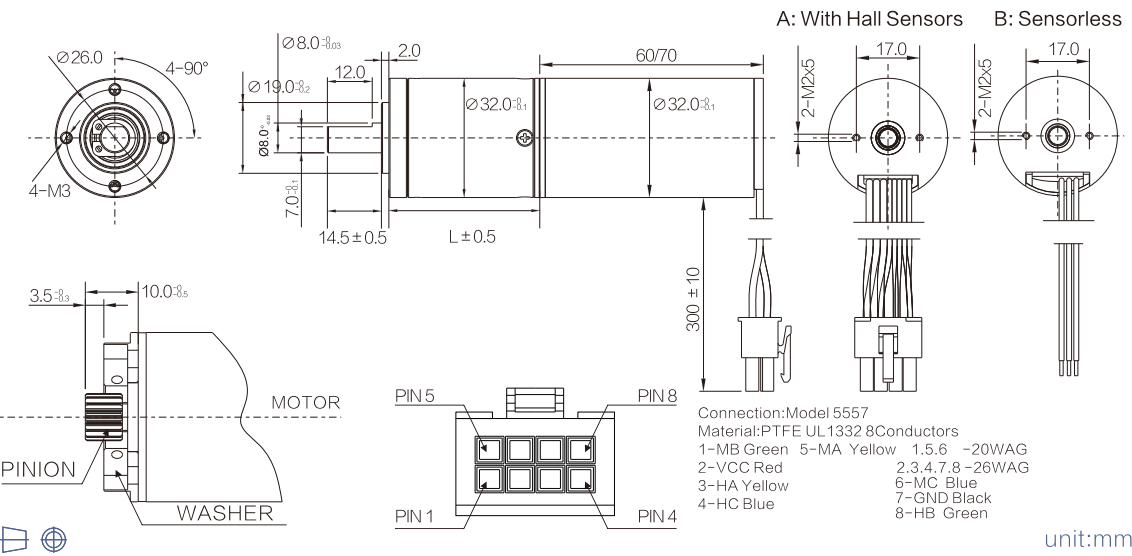
SIG-PG32

Housing material	Metal	Backlash,at no-load	≤3°
Bearing at output		Sleeve bearings	
Radial load(5mm from flange)		≤3kgf	
Shaft axial load		≤2.5kgf	
Shaft press fit force.max		≤10kgf	
Radial play of shaft		≤0.08mm	
Thrust play of shaft		≤0.3mm	



unit:mm

Appearance Size



unit:mm

Pinion Specifications

Module	No. of teeth	Pressure angle	Hole diameter	Reduction ratio
0.5	10	20°	Ø4.99	1/6,1/36,1/216,1/1296
0.5	13	20°	Ø4.99	1/4.85,1/23.5,1/114,1/522.9
0.5	16	20°	Ø4.99	1/4.125,1/17,1/70.2,1/289.5,1/1194.2
0.5	19	20°	Ø4.99	1/3.63,1/13.2,1/47.85,1/173.7,1/1630.5
0.5	22	20°	Ø4.99	1/3.27,1/10.7,1/35,1/374

Gearboxes Specifications

Reduction ratio	1/3.27,1/3.63,1/4.125,1/4.85,1/6	1/10.7,1/13.2,1/17	1/23.5,1/35,1/36,1/47.85	1/70.2	1/114	1/173.7,1/216,1/289.5,1/374,1/522.9,1/630.5,1/1194.2
Rated tolerance torque	2.0	4.0	6.0	8.0	10.0	12.0
Max momentary tolerance torque	6.0	12.0	18.0	24	30	36.0
Efficiency	80%	70%	70%	60%	60%	50%
Length (L)	20.6	27.0	27.0	33.4	33.4	39.8
Weight(g)/Sleeve bearings	101	121	121	146	146	172

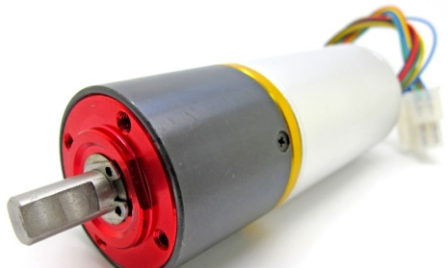
©Operating relative humidity: 20%~85%RH

©Operating temperature range: -10℃~+60℃

Can according to customer requirements and installation speed change size.

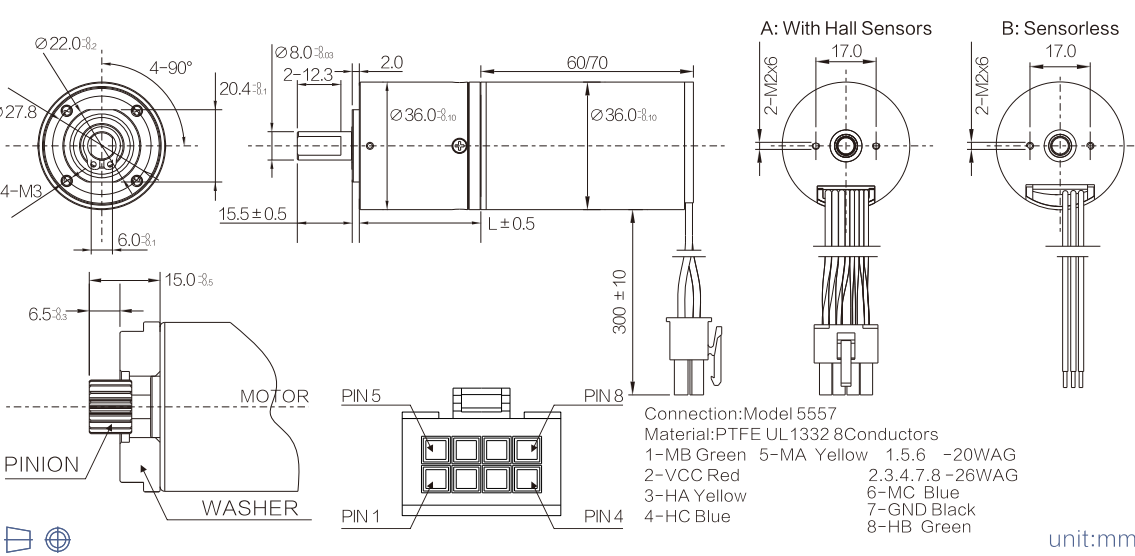
SIG-PG36

Housing material	Metal	Backlash,at no-load	≤3°
Bearing at output		Sleeve bearings	
Radial load(5mm from flange)		≤5kgf	
Shaft axial load		≤3kgf	
Shaft press fit force.max		≤15kgf	
Radial play of shaft		≤0.08mm	
Thrust play of shaft		≤0.3mm	



unit:mm

Appearance Size



unit:mm

Pinion Specifications

Module	No. of teeth	Pressure angle	Hole diameter	Reduction ratio
0.6	11	20°	Ø4.99	1/5.18,1/26.8,1/139,1/720
0.6	14	20°	Ø4.99	1/4.28,1/18.3,1/78.4,1/335.5
0.6	17	20°	Ø4.99	1/3.7,1/13.7,1/50.65,1/187.4,1/693.4
0.6	20	20°	Ø4.99	1/3.3,1/10.9,1/35.9,1/118.6,1/391.38

Gearboxes Specifications

Reduction ratio	1/3.3,1/3.7,1/4.28,1/5.18	1/10.9,1/13.7,1/18.3	1/26.8,1/35.9	1/50.65,1/78.4	1/118.6,1/139	1/335.5,1/391.38	1/693.4,1/720
Rated tolerance torque	3.0	8.0	10.0	18.0	20.0	25.0	30.0
Max momentary tolerance torque	9.0	24.0	30.0	54.0	60.0	75.0	90.0
Efficiency	80%	70%	70%	60%	60%	50%	50%
Length (L)	33.1	41.8	50.5	50.5	50.5	59.2	59.2
Weight(g)/Sleeve bearings	132	172	212	212	212	252	252

©Operating relative humidity: 20%~85%RH

©Operating temperature range: -10℃~+60℃

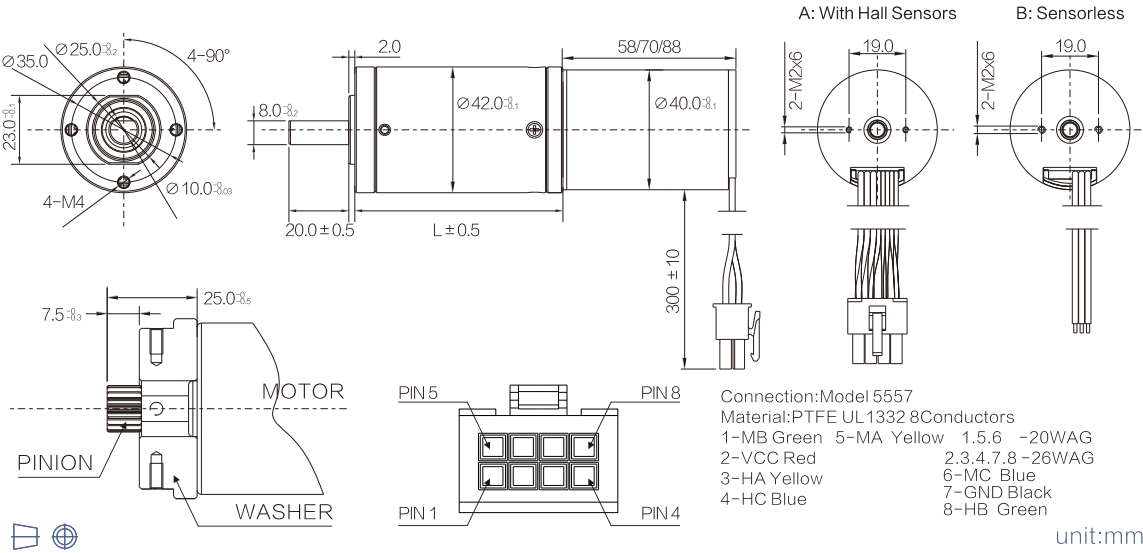
Can according to customer requirements and installation speed change size.

SIG-PG42

Housing material	Metal	Backlash,at no-load	≤3°
Bearing at output		Sleeve bearings	
Radial load(5mm from flange)		≤8kgf	
Shaft axial load		≤3kgf	
Shaft press fit force.max		≤15kgf	
Radial play of shaft		≤0.04mm	
Thrust play of shaft		≤0.3mm	

Appearance Size

unit:mm



Pinion Specifications

Module	No. of teeth	Pressure angle	Hole diameter	Reduction ratio
0.6	7	20°	Ø5.99	1/8.57,1/73.4,1/629
0.6	10	20°	Ø5.99	1/6.3,1/39.69,1/250,1/1575.3
0.6	13	20°	Ø5.99	1/5.07,1/25.7,1/130.3,1/660.7,1/3350
0.6	16	20°	Ø5.99	1/4.313,1/18.6,1/80.2,1/346,1/1492.4
0.6	19	20°	Ø5.99	1/3.789,1/14.36,1/54.4,1/206,1/781,1/2959
0.6	22	20°	Ø5.99	1/3.41,1/11.63,1/135.2,1/461,1/1572.3

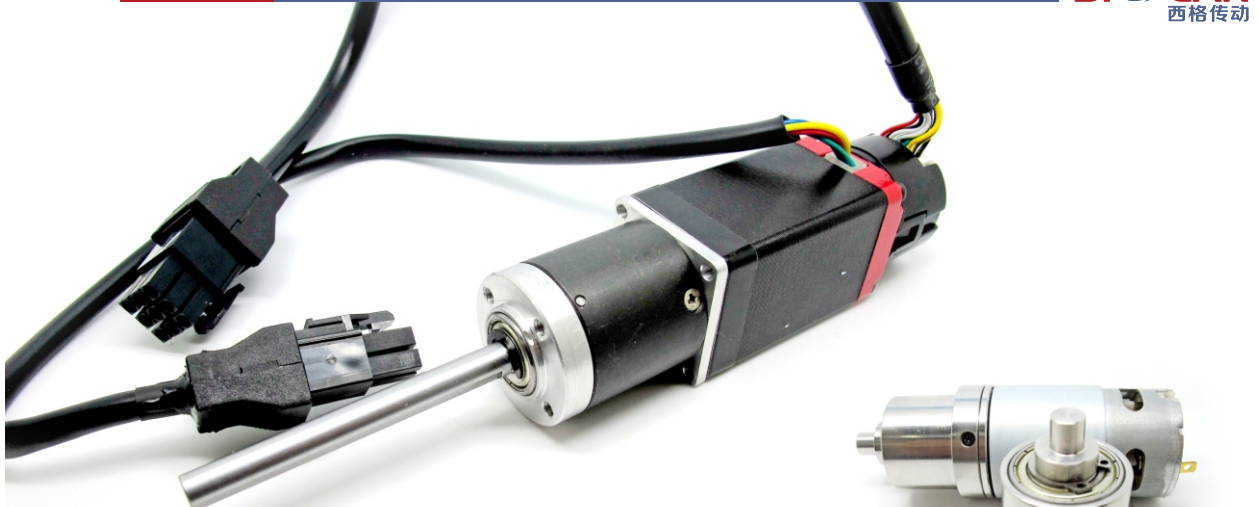
Gearboxes Specifications

Reduction ratio	1/3.41,1/3.789,1/4.313 1/5.07,1/6.3,1/8.57	1/11.63,1/14.36,1/18.6 1/25.7,1/39.69	1/54.4,1/80.2,1/73.4	1/130.3,1/135.2	1/206,1/250,1/346	1/461,1/629 1/660.7,1/781	1/1492.4,1/1572.3,1/1575.3 1/2959,1/3350
Rated tolerance torque	5.0	10.0	18.0	20.0	25.0	30.0	30.0
Max momentary tolerance torque	15.0	30.0	54.0	60.0	75.0	90.0	90.0
Efficiency	80%	70%	60%	60%	50%	50%	40%
Length (L)	32.5	39.2	45.9	45.9	52.6	52.6	59.6
Weight(g)/Sleeve bearings	139	191	231	281	281	281	326

©Operating relative humidity: 20%~85%RH

©Operating temperature range: -10℃~+60℃

Can according to customer requirements and installation speed change size.



Servo planetary gear motor

Bone drill special planet gear motor



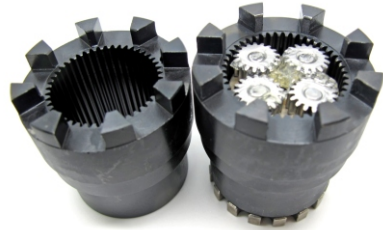
Massager planetary gear motor



Optical sensing planetary gear motor



The yacht antenna rotating planet gearbox



The electric elevator planet gearbox



Dental planet gearbox



Intelligent robot planetary gear motor



 Metal gearbox



 Plastic gear



 Copper gear



 Metal worm



 Plastic planet gearbox



 Metal gear



Parameters of planet gearbox

output	Internal spline/external spline		
Reduction ratio	23:1	25.5:1	27:1
Gear box outside diameter	26/28/30mm		
Maximum load	185kg~200kg		
Load noise	<55Db		

Motor model

2930	2938
2942	2946
2953	2965
26 mm series motor	